

Reg: BLU-03030-AA-NH

Phone No – 080-26583117

# GRACE

***(Geriatric Rehabilitation and Critical Care Center)***

(A Unit of Parimala Hospital)

No. 22/23, Parimala Hospital Campus, Bilekahalli, Bannerghatta Road,  
Bangalore – 560076, Karnataka, India

---

A one stop comprehensive care centre for geriatric and critically ill patients situated strategically on Bannerghatta Main Road, near IIMB, Apollo and Fortis Hospitals.



## **GRACE SCOPE**

- HIP Fracture care
- Fragility fracture care of the wrist,spine,hip
- Post Surgery Rehabilitation
- Medical Rehabilitation of Diabetes and Hypertension patients
- Stroke & Paraplegic Patients
- Geriatric Rehabilitation for Chronic diseases
- Geriatric Critical Care
- Geriatric Counseling
- Yoga/ Meditation
- X-ray/C-Arm/TMT
- Physiotherapy/Rehabilitation
- Medical and Surgical Services
- Gynaec-Oncology Services

## **Types of Facilities available**

- Single Occupancy
- Twin Occupancy
- AC Rooms/ Executive Rooms
- Rooms with attached kitchen units and Toilets
- TV/ Fridge/ Wi-Fi/ Washing Machine
- Community Hall
- Yoga and Prayer Hall
- Counseling/ Prayer Rooms
- Dining Hall
- CCTV/ Security
- Ample 2 and 4 Wheeler Parking Space

**Reception Area**



**Sitting Lounge**



**Waiting Area Room**



**- Spacious Corridors**



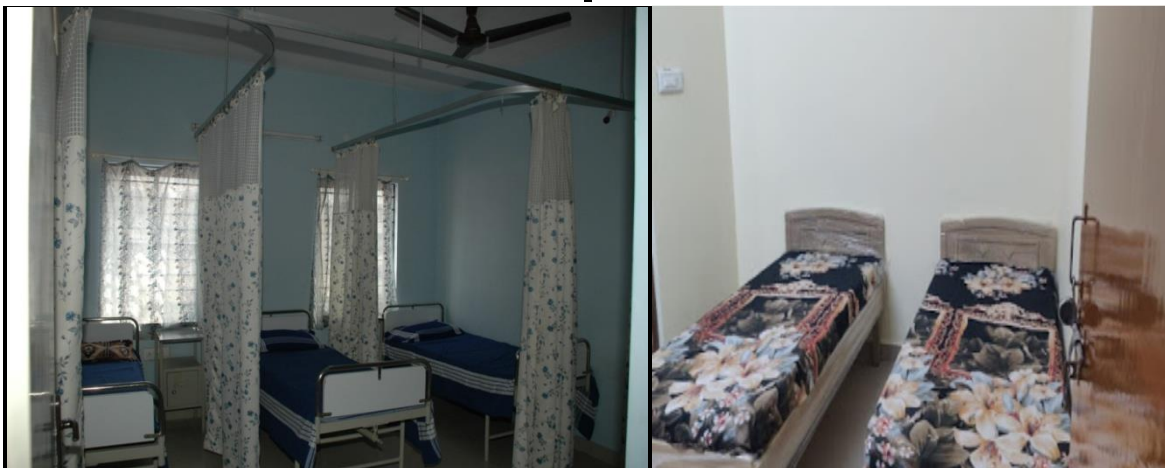
## Types of Wards



**AC Deluxe Ward**



**Twin Sharing Ward**



**Triple Sharing Ward**

**General Beds**

**Single Room – Deluxe**



**Single Room – Special**



**Single Room – Ordinary**



**Twin Sharing Rooms – with Ward Robe, attached Kitchen and Toilets**



**Small Kitchen Unit**



**Attached toilets with geysers, mixers and wash basins**





### Counseling and Lecture Hall



### Community and Party Hall



## Yoga and Meditation hall



## High Speed Stainless Steel Lift



## Wide Stair Cases



## Ample Two Wheeler and 4 Wheeler Parking Spaces

## TARIFFS

### The target geriatric group

- Semi Bedridden patients - 25,000 PM
- Fully Bedridden patients - 30,000 PM
- Deposit – Rs. 50,000 [NC/Food/Accommodation]

### Extra Charges For

- Medicines/Consumables
- Doctors Fees – For Consultation and Visits
- Investigations/X-ray
- Physiotherapy
- Surgery
- Ambulance Services

### Situated Next to Parimala Hospital

Tied up with Parimala Hospital for Emergency Services, Surgery, Medical ICU, Consultant Services, Investigations and Rehabilitation Services.



**Dr John Ebnezar**

Medical Director

Mobile- 09986015128

**For bookings and enquires contact: 6363326144/9066123107**